

Why Choose SMT?

- 30+ Years of Precision Manufacturing Expertise
- 100% On-Time Delivery
- Zero Defect Quality Performance
- Annual Certification for ISO 9001/ISO 14001
- Fully Integrated MRP System
- Intuitive and Collaborative Partnership Experience
- High to Low Volume Capabilities
- Flexible and Creative Engineering
- Annually Certified Metrology Equipment
- Just in Time and EDI Capabilities

OUR MISSION

SMT succeeds because our customers succeed.

We are part of a much larger community to which we are compelled to act responsibly. We act responsibly when we help protect our environment, provide economic opportunity fairly, work safely, and consider the person in all of our business affairs. This allows us to achieve our vision and to provide opportunity for all of the SMT associates that follow us.

GET MORE DONE WITH SMT

**Ready to discuss
a project? Contact us.**

SMT, LLC

2768 Golfview Drive
Naperville, IL 60563
USA

smtinfo@smtllcgroup.com
www.smtllcgroup.com
630-961-3000

**Critical
Assemblies and
Components You
Can Count On**

WIRE PROCESSING



Wire Processing

SMT can provide a single unit or a complex wire harness. Wire can be processed to include multiple interconnect options and can be customized to meet exacting needs. All products are RoHS Compliant.

Capabilities

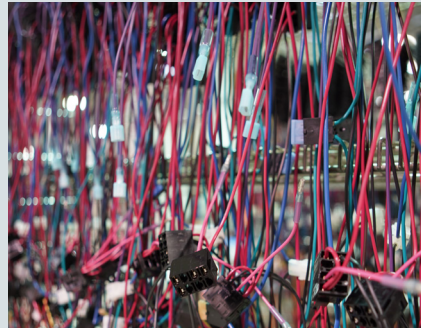
- Wire gauges from 2 AWG to 22 AWG
- Custom and standard termination options
- Smart harness assembly board systems
- Rapid Prototyping
- Inline 100% Crimp Force Monitoring
- Automatic conductor and insulator sectioning analysis
- Pull force testing

Cable and Wire Types

- | | |
|-------------------------|--------------------------|
| • Battery Cable | • Primary Cable |
| • Multi Conductor Cable | • Photovoltaic Wire |
| • Portable Cord | • High Temperature Cable |
| • Coaxial Cable | • UL and CSA Style |
| • Military Cable | • Low to High Voltage |
| • Specialty Cable | • Cable |

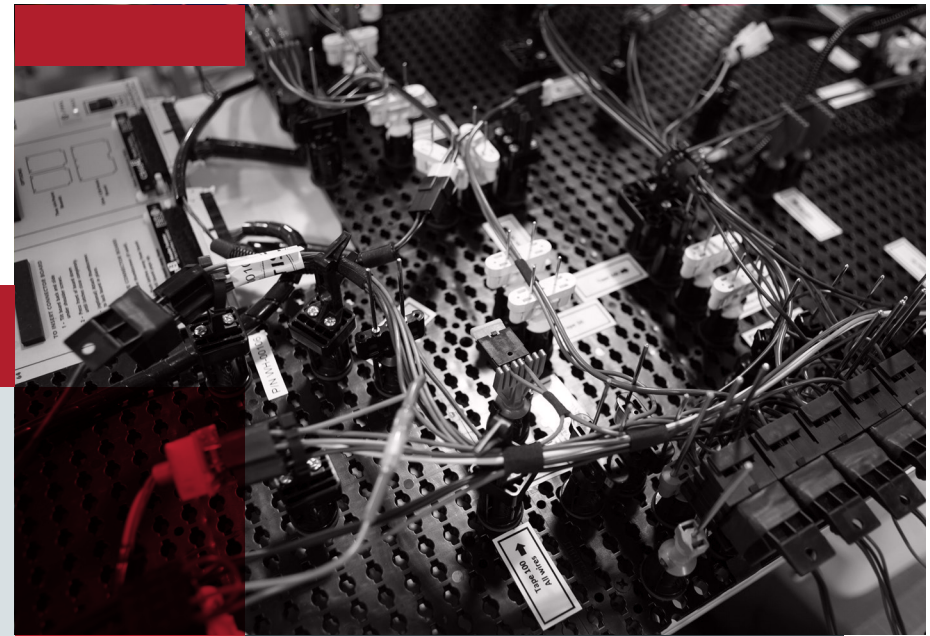
SMT provides customers with total solutions to meet and exceed demanding product requirements.

Take Your Products to Another Level



Working together with SMT, customers will:

- Reduce engineering and development time and cost.
- Improve operating efficiency with on time delivery and improved quality.
- Discover a supportive and innovative partner that cares about your company's goals.
- Find a dedicated team that works hard to help you succeed.



Better collaboration means better products.

SMT can support your wire processing needs.



Call (630) 961-3000